

# MONTHLY MEMBERSHIP PROGRESS REPORT

LOCATION HUNGARY

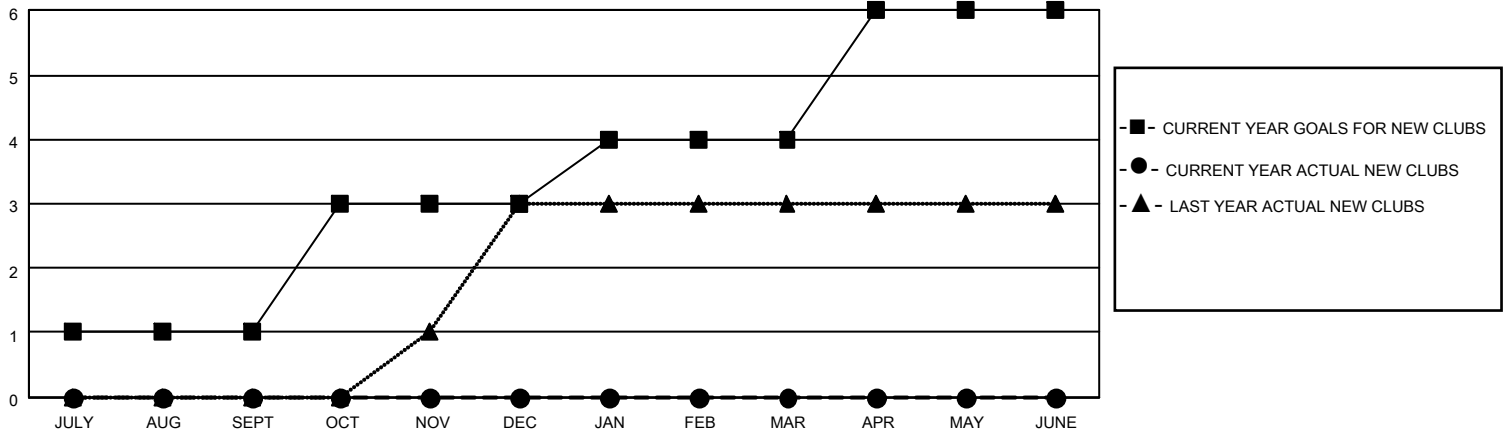
District 119

Results as of: 4/30/2022

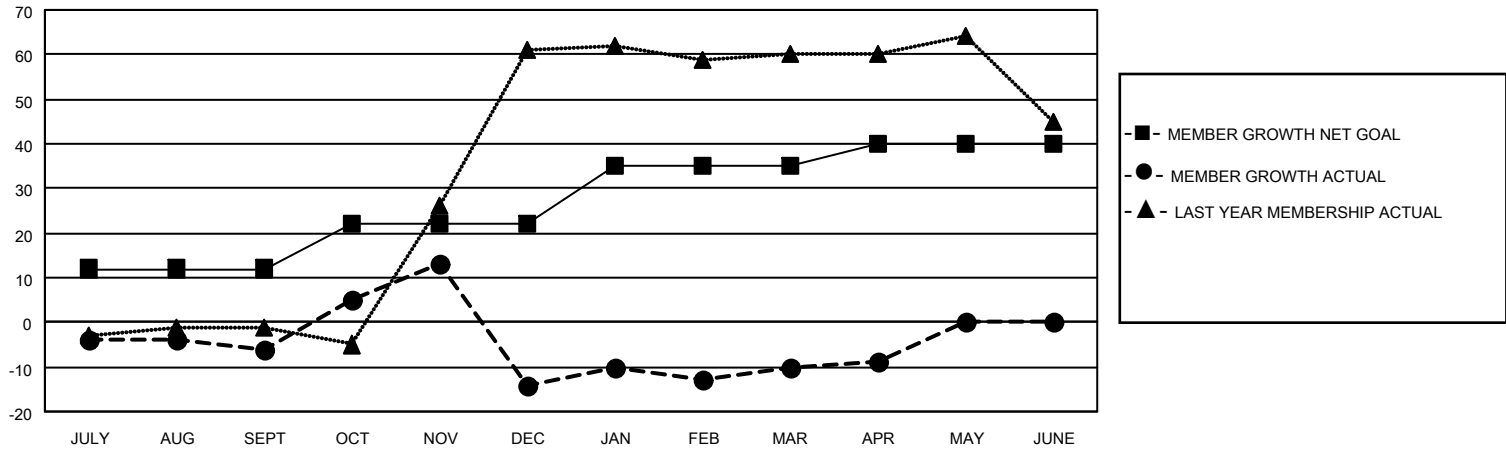
Clubs			
RESULTS FOR 2021-2022			
QUARTER	NEW CLUB GOAL	NEW CLUBS	DROPPED CLUBS
JULY/AUG/SEPT	1	0	0
OCT/NOV/DEC	2	0	1
JAN/FEB/MAR	1	0	0
APR/MAY/JUNE	2	0	0

Members			
RESULTS FOR 2021-2022			
QUARTER	MEMBER GROWTH NET GOAL	MEMBER GROWTH ACTUAL	DROPPED MEMBERS ACTUAL (including transfers)
JULY/AUG/SEPT	12	6	10
OCT/NOV/DEC	10	26	34
JAN/FEB/MAR	13	14	9
APR/MAY/JUNE	5	1	0

**GOALS AND ACTUAL NEW CLUBS CUMULATIVE**



**GOALS AND ACTUAL MEMBERS CUMULATIVE**



**DROPPED CLUBS: 1**

**18 CLUBS OF 44 ADDED 1 OR MORE NEW MEMBERS**

**GENDER DISTRIBUTION**

MALE	538 (58.61%)
FEMALE	377 (41.07%)
NON BINARY	0 (0.00%)
PREFER NOT TO ANSWER	3 (0.33%)

**DROPPED MEMBERS**

DECEASED	3
CLUB CANCELLED	13
OTHER	37
<b>TOTAL</b>	<b>53</b>

[CLICK HERE FOR CUMULATIVE MEMBERSHIP DATA](#)

TOTAL FAMILY UNIT MEMBERS	175
FAMILY MEMBERS PAYING HALF DUES	89